



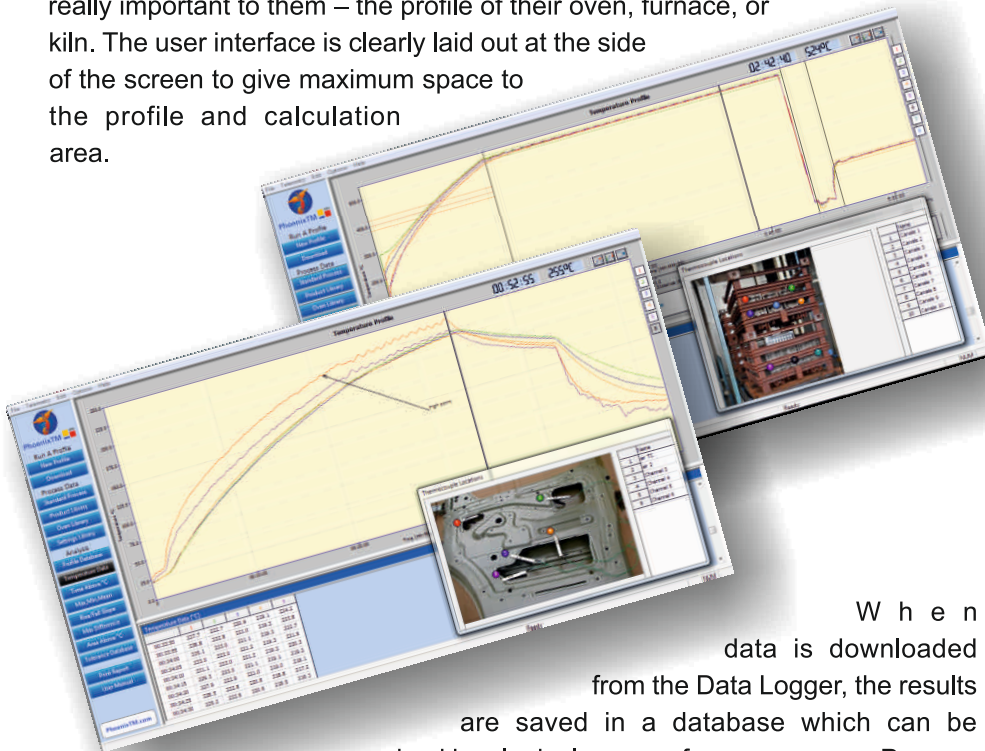
**PhoenixTM**  
Phoenix Temperature Measurement

## 'Thermal View' and 'Thermal View Plus' Analysis Software

PhoenixTM 'Thermal View Plus' is a powerful, software package for analysing data from your process. Screen layout is clear, and using the enhanced control bar, it is a very easy package to operate, with all the analysis functions you will need.

Above all two key elements have been fundamental in the design of this software:

- **Simplicity:** many software packages have functions built in that benefit only a few users and complicate the package for the majority. We have stripped out any complicated features, and wherever possible have added 'graphical interfaces to make Thermal View Plus software intuitive, and easy to use.
- **Clarity:** the software screen has been laid out so users can see what is really important to them – the profile of their oven, furnace, or kiln. The user interface is clearly laid out at the side of the screen to give maximum space to the profile and calculation area.



When data is downloaded from the Data Logger, the results are saved in a database which can be organized in a logical manner for easy access. Process templates can then be constructed so the data can be overlaid against a backdrop which displays all physical points within your oven/kiln/furnace.

PhoenixTM software is available in two versions; 'Thermal View' a comprehensive package for finishing users, and 'Thermal View Plus' a package with extra analysis features including real time operation, for heat treatment and ceramics users.

PhoenixTM software has all the essential functions you require to keep your process under control.

PhoenixTM GmbH  
Zum Rehmer Eck 22  
32547 Bad Oeynhausen  
Germany

Tel.: +49 5731 300280 0 info@phoenixtm.de  
Fax.: +49 5731 300280 9 www.phoenixtm.de



PhoenixTM Ltd  
8 St. Thomas Place,  
Cambridgeshire Business Park,  
Ely, CB7 4EX, UK

Tel: +44 (0) 1353 223100 sales@phoenixtm.com  
Fax: +44 (0) 1353 968684 www.phoenixtm.com

ANALYSIS SOFTWARE

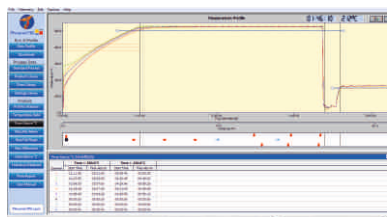
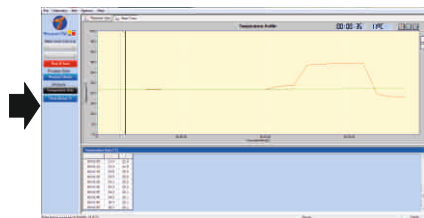


**PhoenixTM**  
Phoenix Temperature Measurement

## 'Thermal View Plus' Analysis Software - Key Screens

### Real Time Operation

In real time operation the data logger, protected by it's thermal barrier, transmits data from inside the furnace. Thermal View Plus software then displays the temperature profile in your furnace. It has the ability to zoom in great detail which is vital for surveying operations. It is also possible to switch screens to examine other data files while the current real time run operates in the background.

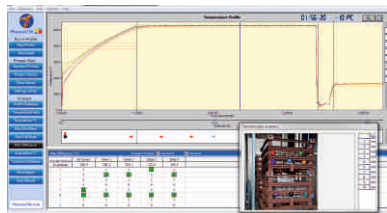
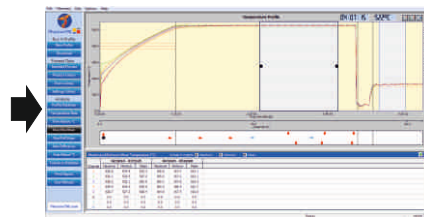


### Time Above Temperature

This screen displays the time a product has spent above specific temperature levels. A unique 'graphical interface' allows you to 'draw' these temperature levels on the screen so calculations are only made within a specific time period. So in processes such as aluminium solution treatment, calculations can be made easily and accurately at the higher and lower temperature levels.

### Maximum, Minimum, Mean

This screen displays the maximum, minimum, and mean temperature for a defined period in the process. Again using a graphical interface, discreet 'inspection areas' are created which can be dragged to any position and expanded to the specific region you need to examine.



### Maximum Difference

This screen shows the maximum temperature difference between lowest and highest thermocouple readings either within the specific heating zones of an oven/furnace/kiln, or at a point within the process where the cursor is positioned. Thermocouples can be deselected to show only product or atmosphere temperatures.

### Feature:

Thermocouple and Instrument  
Correction Factors  
Temperature Data  
Time Above Temperature  
Max, Min, Mean Temperature  
Rise / Fall Slope  
Maximum Difference  
Area Above Temperature  
Tolerance Database  
Reference Profile  
On Screen Notes  
Printed Report  
Export to CSV File  
RF & USB Real Time Analysis  
On Screen Help  
Process Libraries  
Product Libraries  
Merge Profile Data

Feature:	Thermocouple and Instrument	Correction Factors	Temperature Data	Time Above Temperature	Max, Min, Mean Temperature	Rise / Fall Slope	Maximum Difference	Area Above Temperature	Tolerance Database	Reference Profile	On Screen Notes	Printed Report	Export to CSV File	RF & USB Real Time Analysis	On Screen Help	Process Libraries	Product Libraries	Merge Profile Data
Thermal View Plus	●	●	●	●	●	●	●	●	●	●	●	●	●	●	●	●	●	●
Thermal View		●	●	●	●				●	●	●	●		●		●		

Note: As products are continually improved, specifications may be changed without prior notice.

Represented by:

[www.phoenixtm.de](http://www.phoenixtm.de)

[www.phoenixtm.com](http://www.phoenixtm.com)

*Where experience counts!!*

ANALYSIS SOFTWARE